

Dimensions (mm)	X	C	W	N	Weight (Kg)
BEKET 412/24/12	16	24	34	12	0,300
BEKET 412/31/12	16	31	34	12	0,340

TECHNICAL SPECIFICATIONS

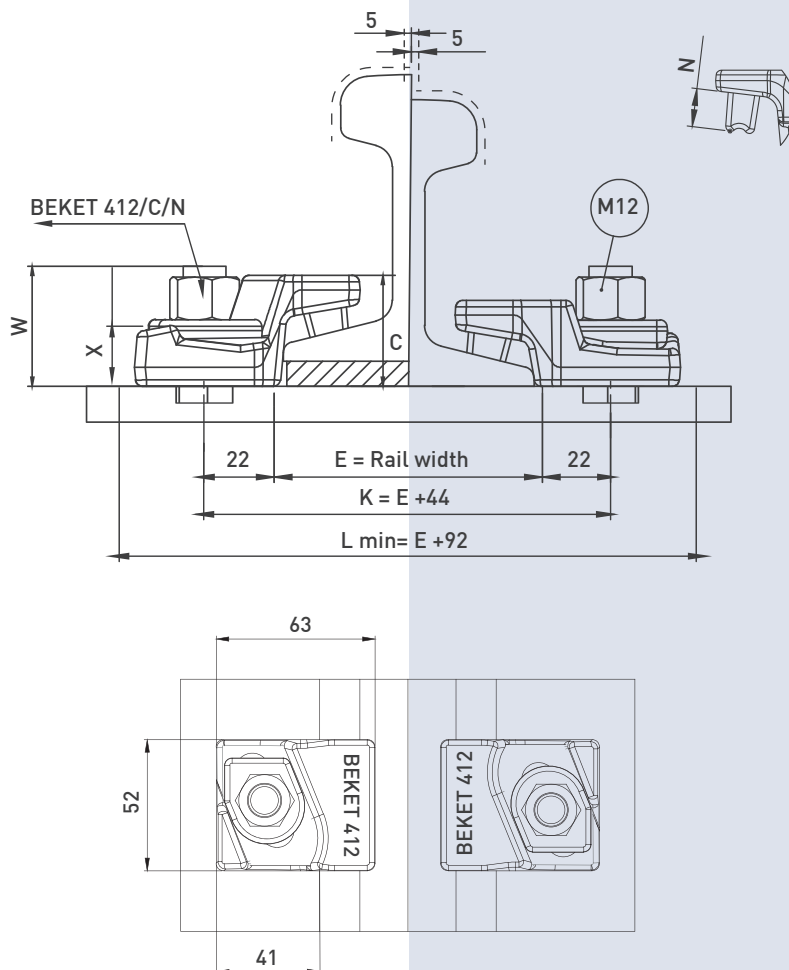
- Max side load 30 kN
- Lateral adjustment 10 mm
- Bolt M12 Grade 8.8
- Tightening Torque 85 Nm
- Steel Quality St52-3

MAIN FEATURES

- 1- BEKET 412 bolted rail clip, which is produced from a forged part, enables ease of assembly thanks to its special design.
- 2- The clips can be preferred for rails with or without pads.
- 3- The main part is locked to rail with M12 bolt and special washer.
- 4- The rubber nose increases the tolerances of the rail support structures, reduces the stress of the connections, allows a better fixing of the rail.

1 RAIL WITH PAD

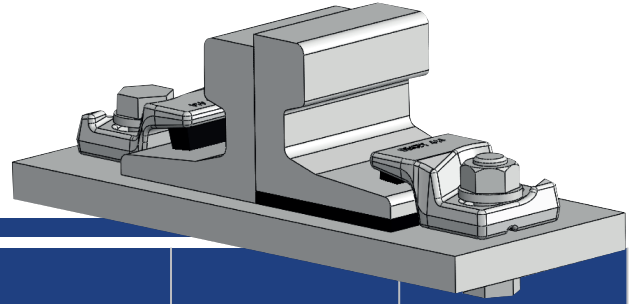
2 RAIL WITHOUT PAD

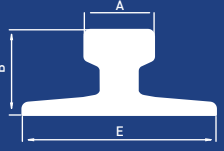


- Flange nut can also be used on request. Please consult us for using flange nut.

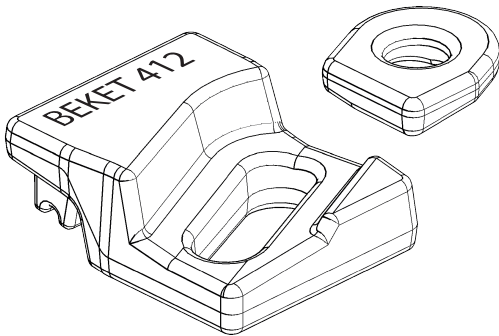
412

Beket 412 Bolted Rail Clips



	A	B	E	Without Pad	With Pad
A45	45	55	125	412/24/12	412/31/12
S7	25	65	50	412/24/12	412/31/12
S10	32	70	58	412/24/12	412/31/12
S14	38	80	70	412/24/12	412/31/12
S18	43	92	82	412/24/12	412/31/12
S20	44	100	82	412/24/12	412/31/12
S24	53	115	90	412/24/12	412/31/12
9 KG	32	64	64	412/24/12	412/31/12
12 KG	43	70	70	412/24/12	412/31/12
15 KG	43	80	80	412/24/12	412/31/12
22 KG	51	94	94	412/24/12	412/31/12
ASC20	34	66	60	412/24/12	412/31/12
ASC25	38	69	69	412/24/12	412/31/12
ASC30	43	30	79	412/24/12	412/31/12
ASC40	48	40	89	412/24/12	412/31/12

Clip can be with more type of rails than those listed.



INSTALLATION INSTRUCTIONS:

The main component is first positioned on the bolt against the rail and the special washer is then positioned on the main component. The nut is hand tightened. Hammer is used for tighter contact. The main component is in position, use an electrical or pneumatic wrench to torque the nut. Please contact BEKET for full installation instructions.

